

Welcome to the Parishes of St Peter and St Thomas

Services for today, Sunday 25th January 2026

St Peter's Heversham

- 8.00 am Holy Communion (BCP)
9.30 am Morning Praise.
PCC person on duty: Lizzie Fawcett.
Join us afterwards for coffee.

St Thomas' Milnthorpe

- 11.15 am Parish Communion with quiet activities for children.
Join us afterwards for coffee.

Services for next Sunday, 1st February

- 8.00 am Holy Communion (BCP) at St Thomas'.
9.30 am Parish Communion at St Peter's
PCC person on duty: George Handley.
11.15 am Morning Praise with Sunday School at St Thomas'.

This week in our parishes

- Tue 27th 10-11.30 am **Heversham Village Coffee Time** (deferred from last week) at the Old School, along the path from St Peter's. Everyone welcome. Simply coffee, biscuits and chat. No charge, just a donation. **New coffee machine in operation** ~ our coffee's now better than ever!
- 1.00 pm Kathleen Dawson's funeral at St Thomas', Milnthorpe.
- Wed 28th 7.00 pm KEMC Open Meeting at Arnside Methodist Church (see notice).
- Thu 29th 10.00 am Bible Study at St Thomas'.
Also on Zoom, link from Bryan.
- Fri 30th 10-11.30 am Coffee @ St T's.
12.00 noon Come and pray at St Thomas'. All welcome.

Notice

KEMC Open Meeting

Wednesday 28th January, 7.00 pm at Arnside Methodist Church

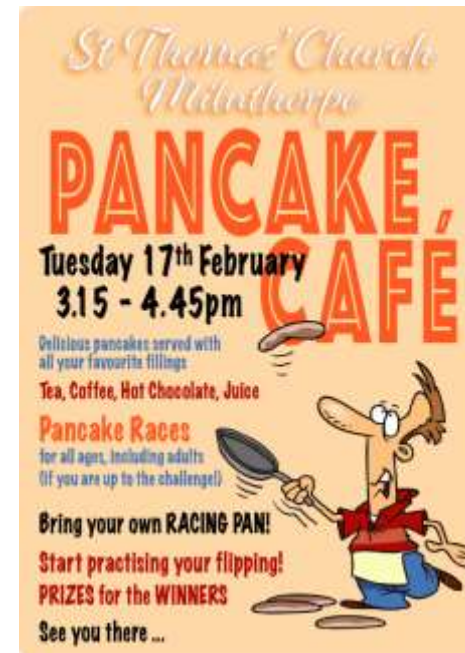
All members of the eight churches in the Mission Community are invited. In the context of worship, the Working Group will share its proposals for the direction of travel. There will be prayer for God's guidance and grace as we seek to hear what the Spirit might be saying to the churches at this important time. The proposals will be considered formally by each PCC and Methodist Church Council at their meetings in February and March.

Dates for your Diary

John Thorley's funeral

Thursday 5th February, 2.00 pm at St Thomas'

John's funeral will be followed by private committal at Beetham, and refreshments at St Thomas'.



Notices for next Sunday to Diane.
Deadline Tuesday, 6.00 pm.